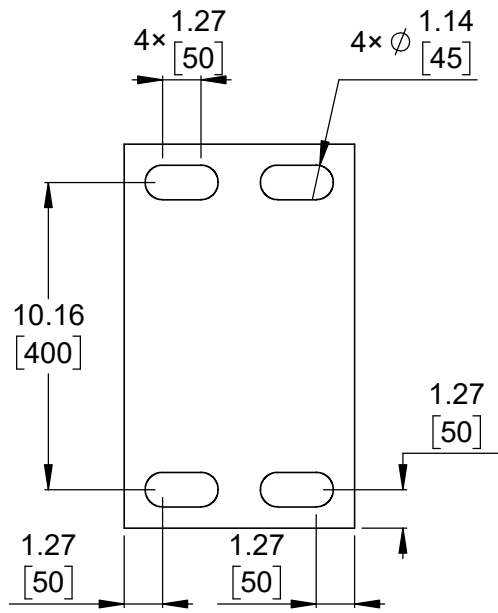
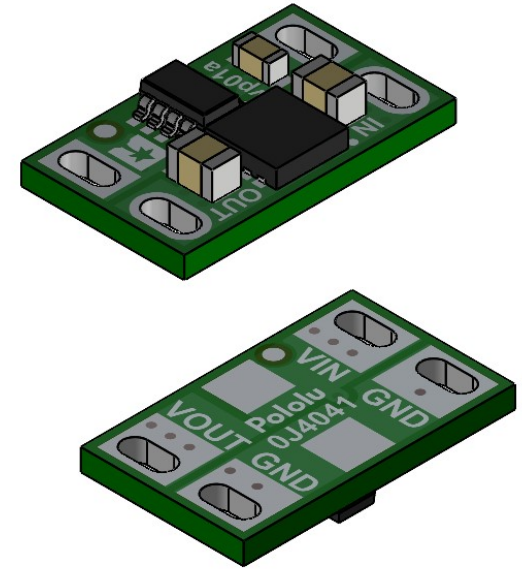


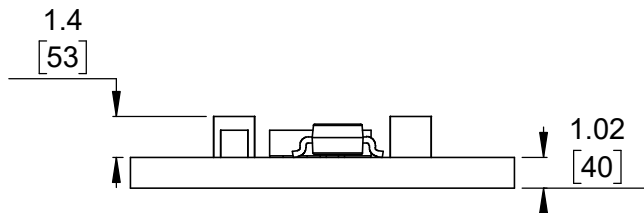
① Board dimensions (top view)
Scale 4:1



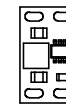
② Connector callouts (bottom view)
Scale 4:1



③ Isometric view
Scale 4:1




④ Profile
Scale 4:1

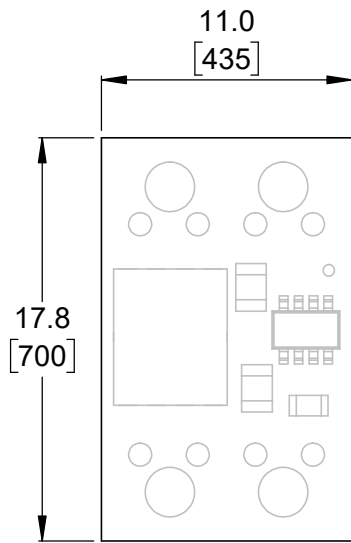


⑤ Actual size
Scale 1:1

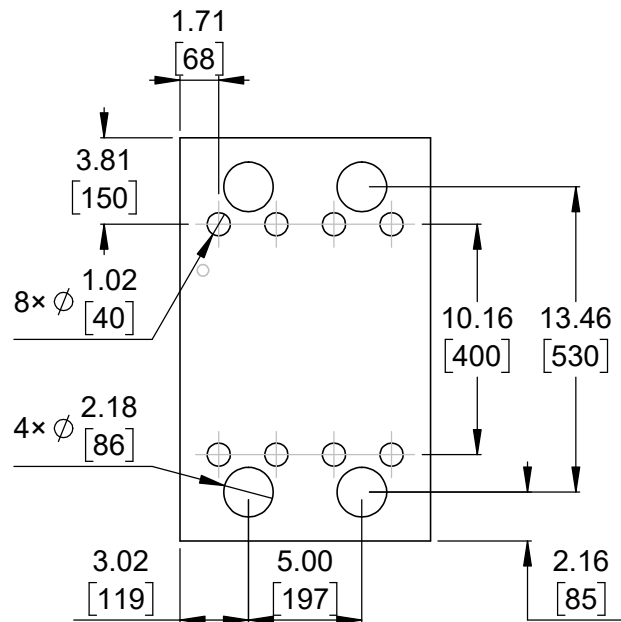
1. To get the specified scale, select 100% in print settings.
2. Drill location tolerance: ± 0.1 [± 5].
3. Board edge tolerance: ± 0.3 [± 10].

<https://www.pololu.com/category/329>

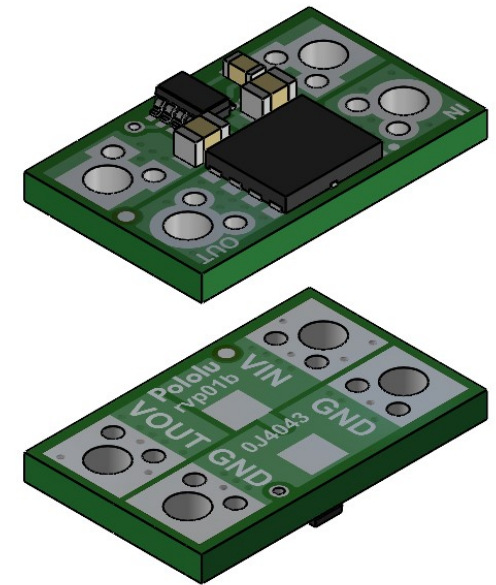
Name: Pololu 10A/12A Reverse Voltage Protectors		Item number: 5380-5383
Drawing date: 4 December 2025	Dev code: rvp01a	 © 2025 Pololu Corporation
Units: mm [mil]	Material: mixed	



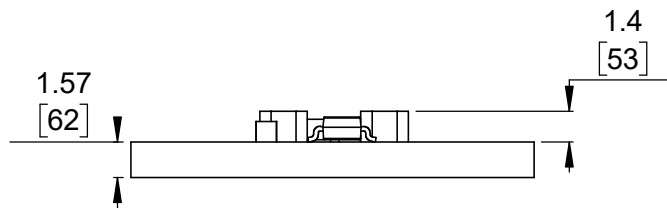
① Board dimensions (top view)
Scale 3:1



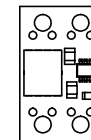
② Connector callouts (bottom view)
Scale 3:1



③ Isometric view
Scale 3:1




④ Profile
Scale 3:1



⑤ Actual size
Scale 1:1

1. Grid lines indicate 2.54 mm [100 mil] spacing.
2. To get the specified scale, select 100% in print settings.
3. Drill location tolerance: ± 0.1 [± 5].
4. Board edge tolerance: ± 0.3 [± 10].

<https://www.pololu.com/category/329>

Name: Pololu 20A/25A Reverse Voltage Protectors		Item number: 5386-5389
Drawing date: 4 December 2025	Dev code: rvp01b	 © 2025 Pololu Corporation
Units: mm [mil]	Material: mixed	