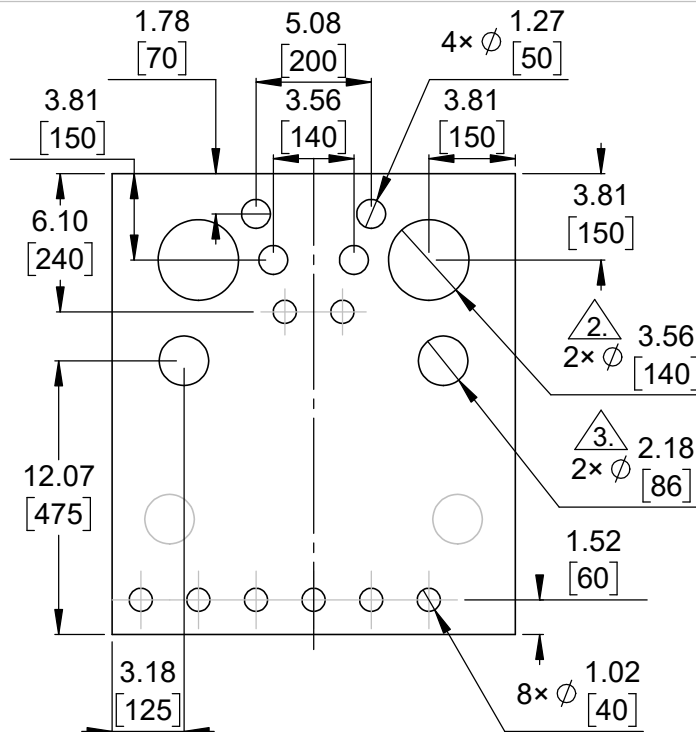
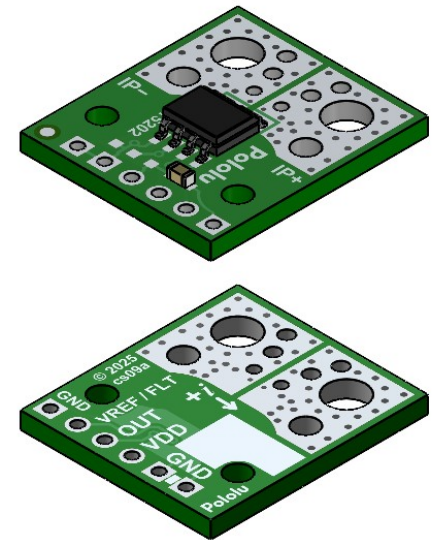


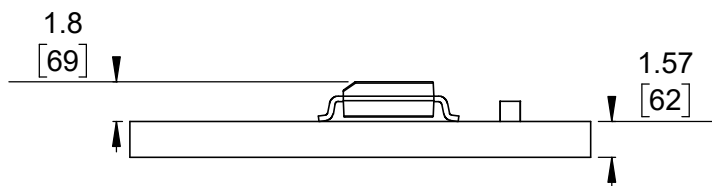
① Board dimensions (top view)
Scale 3:1



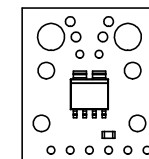
② Connector callouts (bottom view)
Scale 3:1



③ Isometric view
Scale 2:1



④ Profile
Scale 3:1



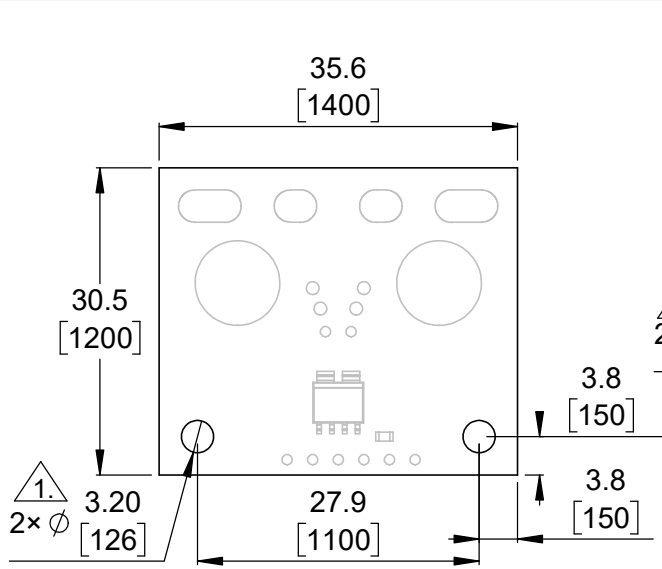
⑤ Actual size
Scale 1:1

- ①. Intended for #2 and M2 screws.
- ②. Intended for #6 and M3.5 screws and 10 AWG or thinner wire.
- ③. Intended for #2 and M2 screws and 14 AWG or thinner wire.
- 4. Grid lines indicate 2.54 mm [100 mil] spacing.
- 5. To get the specified scale, select 100% in print settings.
- 6. Drill location tolerance: ± 0.1 [± 5].
- 7. Board edge tolerance: ± 0.3 [± 10].

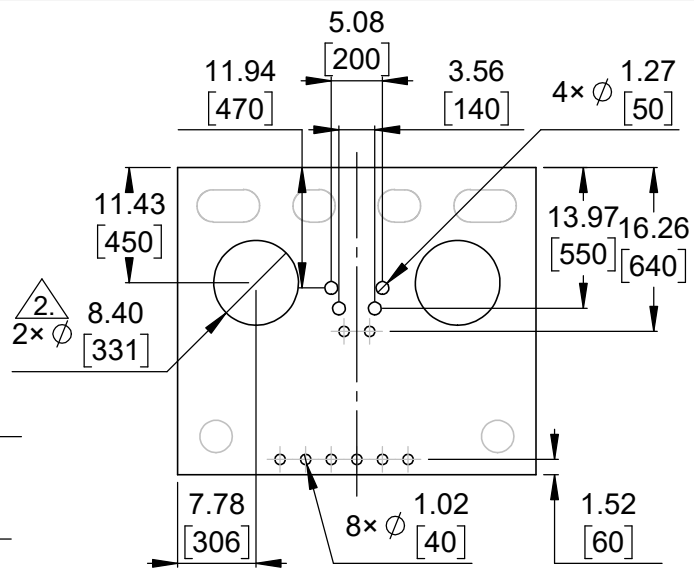
<https://www.pololu.com/category/332>

Name: ACS37030LZ Current Sensor Compact Carriers		Item number: 5230-5232
Drawing date: 20 May 2026	Dev code: cs09a	
Units: mm [mil]	Material: mixed	

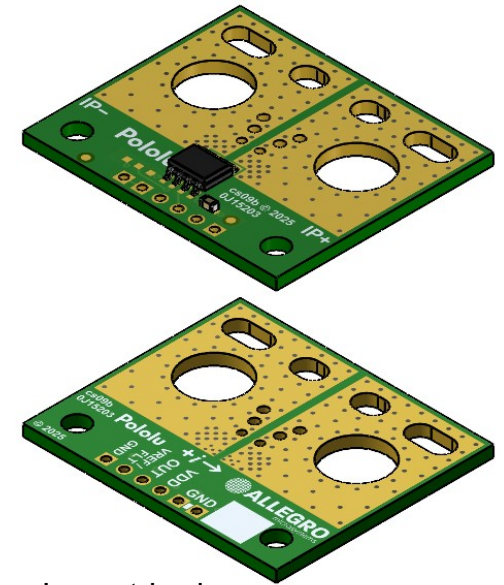




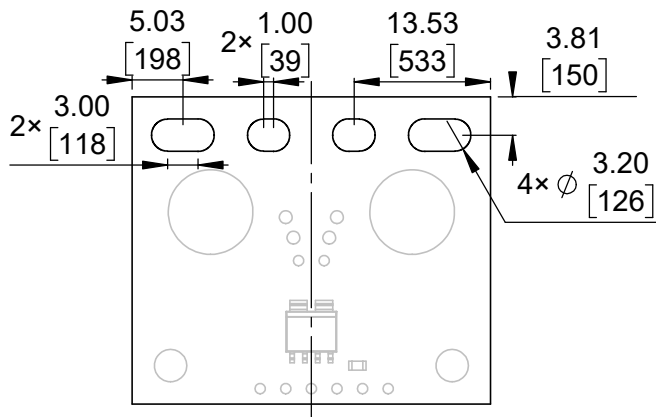
① Board dimensions (top view)
Scale 4:3



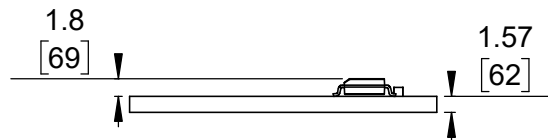
② Connector callouts (bottom view)
Scale 4:3



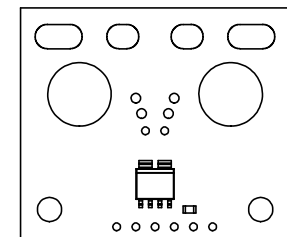
③ Isometric view
Scale 4:3



④ Connector callouts (slots) ③
Scale 4:3




⑤ Profile
Scale 4:3

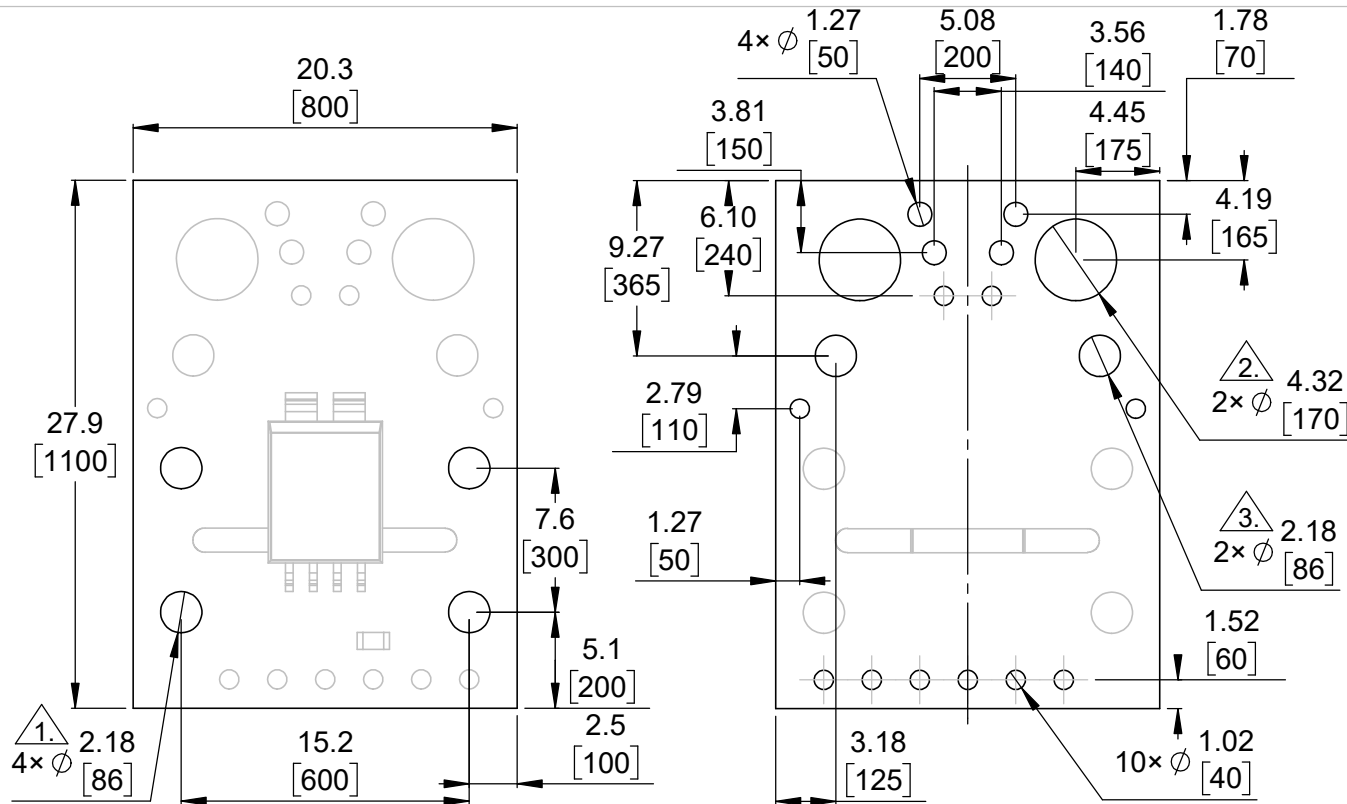


⑥ Actual size
Scale 1:1

- ①. Intended for #4 and M3 screws.
- ②. Intended for 5/16" and M8 screws and 2 AWG or thinner wire.
- ③. Slots intended for 7.5 mm to 9.5 mm pitch connectors.
- 4. Grid lines indicate 2.54 mm [100 mil] spacing.
- 5. To get the specified scale, select 100% in print settings.
- 6. Drill location tolerance: ± 0.1 [± 5].
- 7. Board edge tolerance: ± 0.3 [± 10].

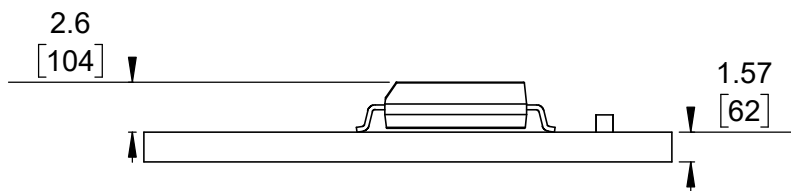
<https://www.pololu.com/category/332>

Name: ACS37030LZ Current Sensor Large Carriers		Item number: 5233-5235
Drawing date: 20 May 2026	Dev code: cs09b	 © 2026 Pololu Corporation
Units: mm [mil]	Material: mixed	

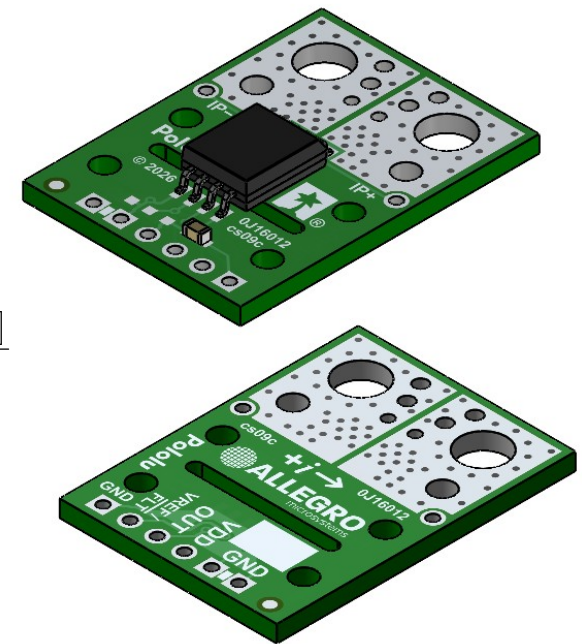


1 Board dimensions (top view)
Scale 5:2

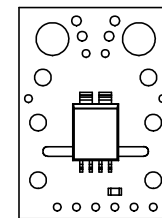
2 Connector callouts (bottom view)
Scale 5:2



4 Profile
Scale 5:2



3 Isometric view
Scale 2:1

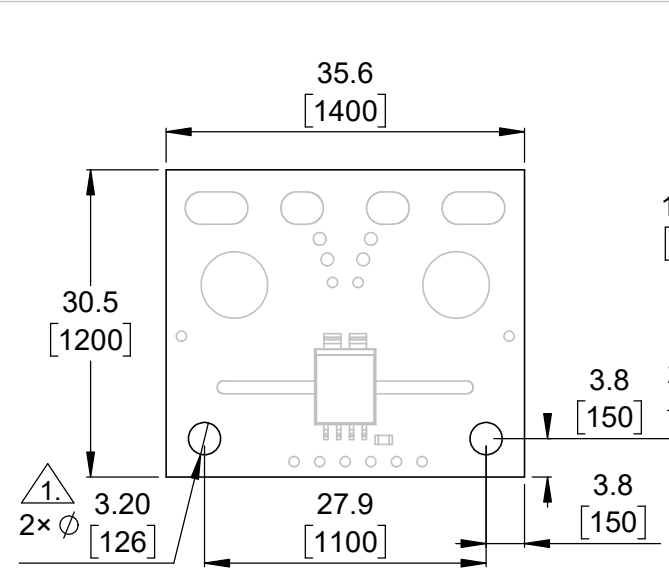


5 Actual size
Scale 1:1

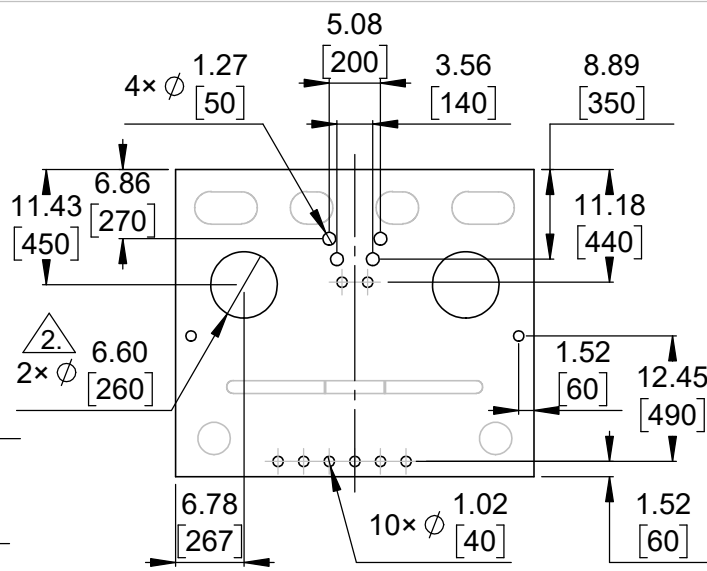
- 1. Intended for #2 and M2 screws.
- 2. Intended for #8 and M4 screws and 8 AWG or thinner wire.
- 3. Intended for #2 and M2 screws and 14 AWG or thinner wire.
- 4. Grid lines indicate 2.54 mm [100 mil] spacing.
- 5. To get the specified scale, select 100% in print settings.
- 6. Drill location tolerance: ± 0.1 [± 5].
- 7. Board edge tolerance: ± 0.3 [± 10].

https://www.pololu.com/category/332			
Name: ACS37030MY Current Sensor Compact Carriers		Item number: 5694-5696	
Drawing date: 20 May 2026		Dev code: cs09c	
Units: mm [mil]		Material: mixed	

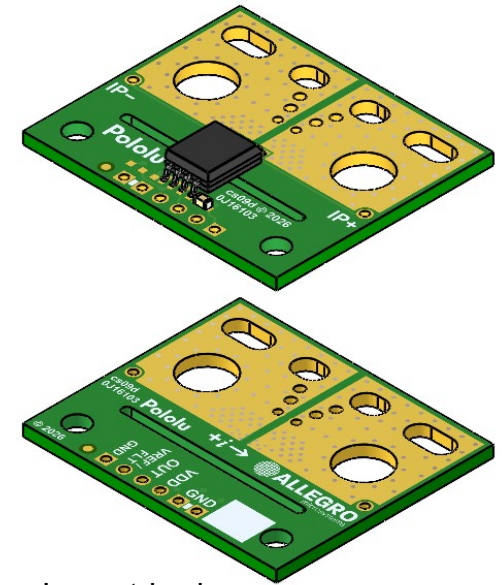




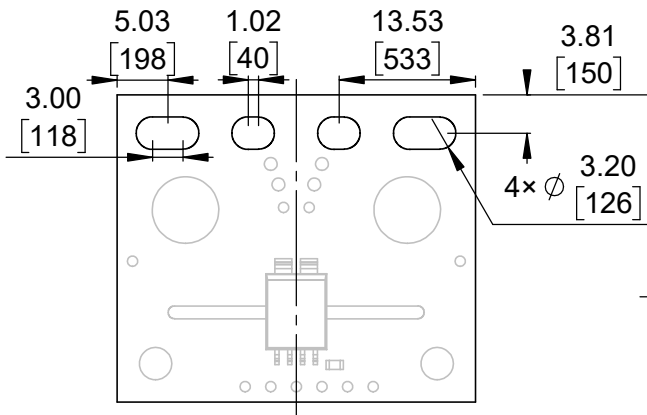
① Board dimensions (top view)
Scale 4:3



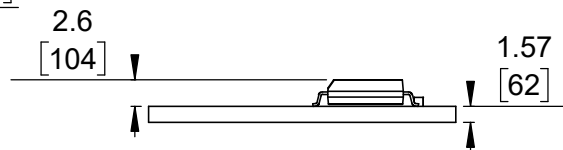
② Connector callouts (bottom view)
Scale 4:3



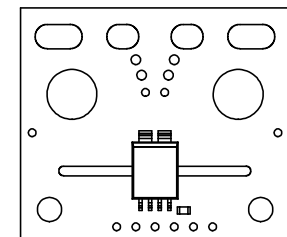
③ Isometric view
Scale 4:3



④ Connector callouts (slots) ③
Scale 4:3




⑤ Profile
Scale 4:3



⑥ Actual size
Scale 1:1

- ①. Intended for #4 and M3 screws.
- ②. Intended for 1/4" and M6 screws and 4 AWG or thinner wire.
- ③. Slots intended for 7.5 mm to 9.5 mm pitch connectors.
- 4. Grid lines indicate 2.54 mm [100 mil] spacing.
- 5. To get the specified scale, select 100% in print settings.
- 6. Drill location tolerance: ± 0.1 [± 5].
- 7. Board edge tolerance: ± 0.3 [± 10].

<https://www.pololu.com/category/332>

Name: ACS37030MY Current Sensor Large Carriers		Item number: 5697-5699
Drawing date: 20 May 2026	Dev code: cs09d	 © 2026 Pololu Corporation
Units: mm [mil]	Material: mixed	