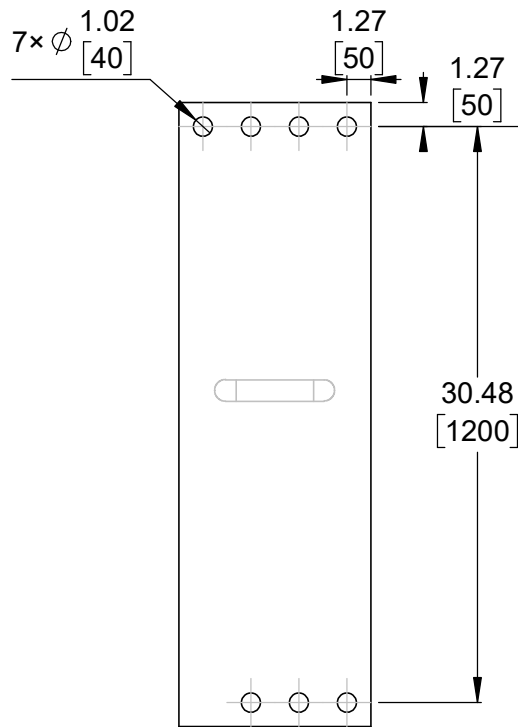
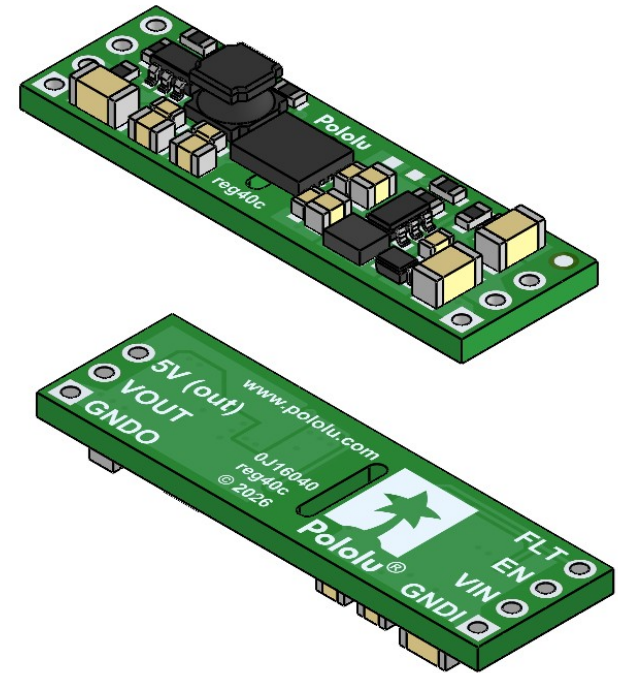


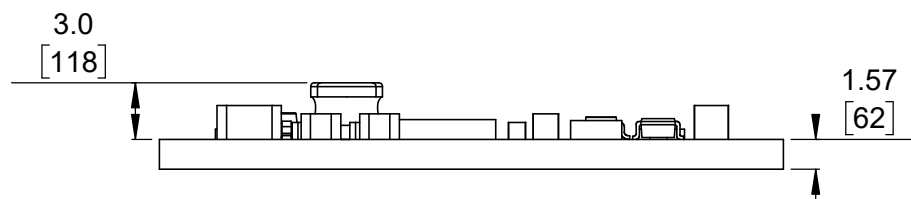
① Board dimensions (top view)
Scale 5:2



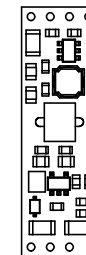
② Connector callouts (bottom view)
Scale 5:2



③ Isometric view
Scale 5:2



④ Profile
Scale 5:2



⑤ Actual size
Scale 1:1

1. Grid lines indicate 2.54 mm [100 mil] spacing.
2. To get the specified scale, select 100% in print settings.
3. Drill location tolerance: ± 0.1 [± 5].
4. Board edge tolerance: ± 0.3 [± 10].

<https://www.pololu.com/product/5764>

Name: 12V, 100mA Isolated Step-Up/Step-Down Voltage Regulator S21Z1F12		Item number: 5764	
Drawing date: 13 May 2026		Dev code: reg40c	
Units: mm [mil]	Material: mixed		

